

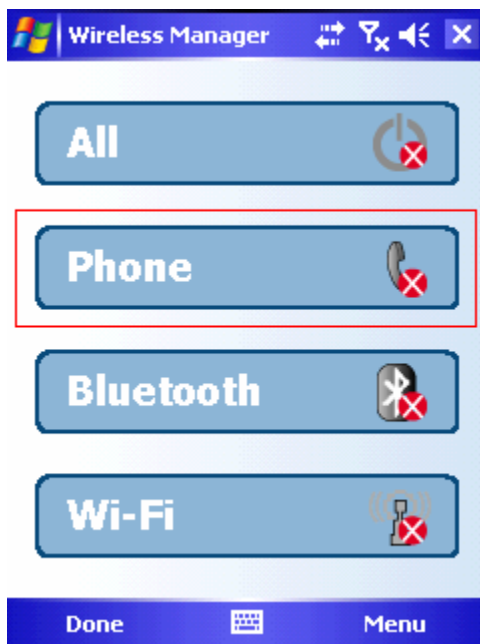
1. FOR iDo TIN & NEON Models



2. Upgrade the step

a. Open the wireless administrator and close GSM

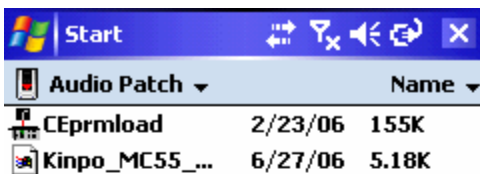
(Enter the flight mode)



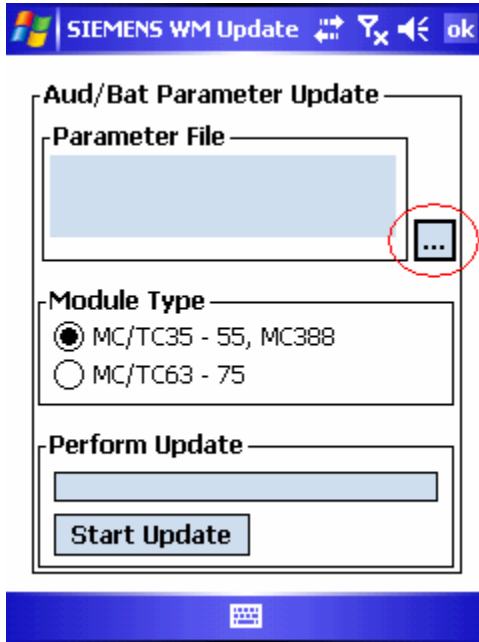
b. Check whether GSM is closed



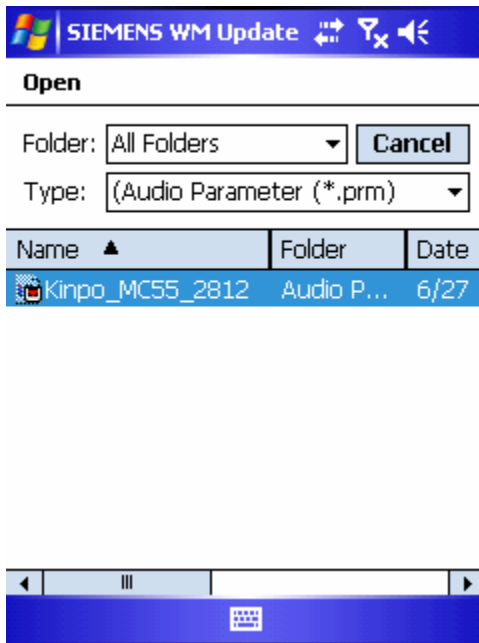
c. Carry out "CEprmload" procedure



d. Choose parameter file



e. Choose Parameter edition



f. Please click “Start Update”

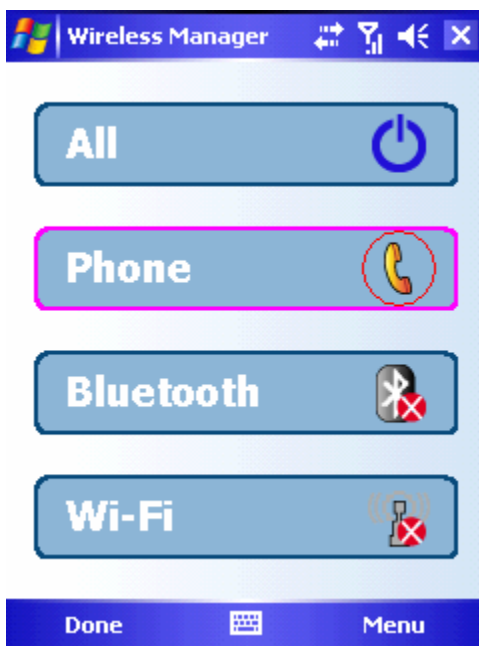
2-1. Confirm whether to write into the step of the file or not.

There are two kinds of affirmation ways.

1. The first kind: Confirm under OS
2. The second kind is carried out from AP procedure

The first kind: Confirm under OS

a. Open the wireless administrator and open GSM

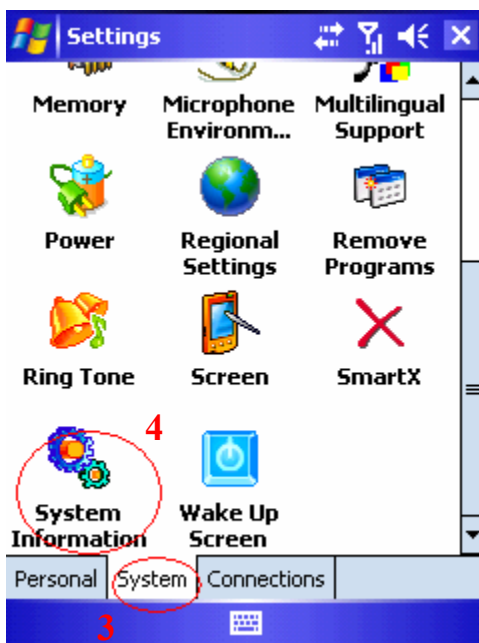


b. Please carry out according to the step

- c. 1. (Press and begin)
- 2. (Press and set up)

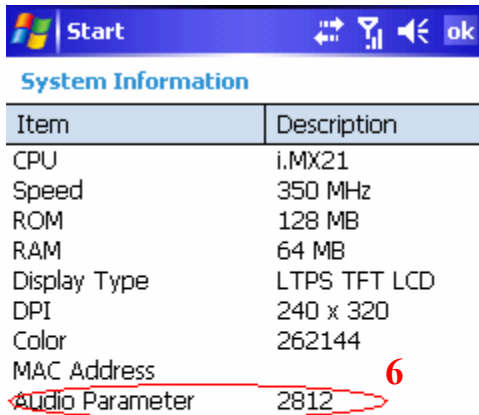


- d. 3. (Press the system)
- 4. (According to the information of the device)



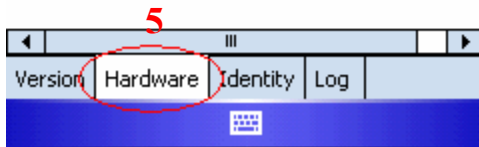
e. 5. (According to the information of the hardware)

6. Audio Parameter (Show that upgrades the edition)



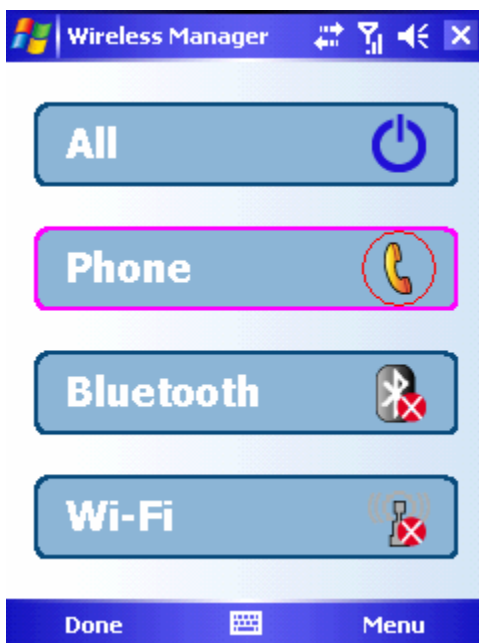
The screenshot shows the 'System Information' screen with a table of hardware details. The 'Audio Parameter' row is circled in red and has a red '6' next to it.

Item	Description
CPU	i.MX21
Speed	350 MHz
ROM	128 MB
RAM	64 MB
Display Type	LTPS TFT LCD
DPI	240 x 320
Color	262144
MAC Address	
Audio Parameter	2812

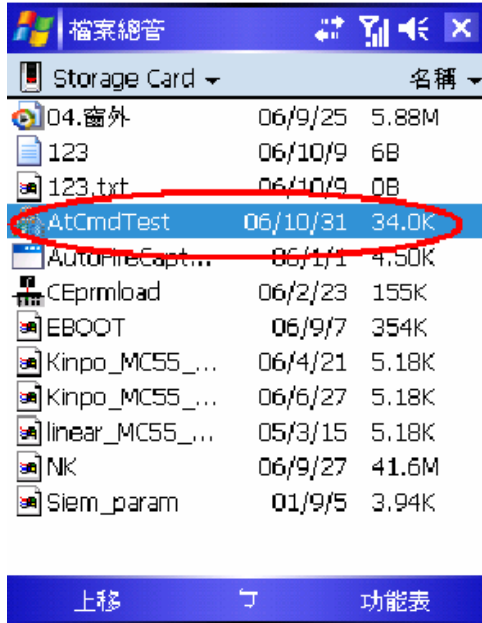


The second kind is carried out from AP procedure

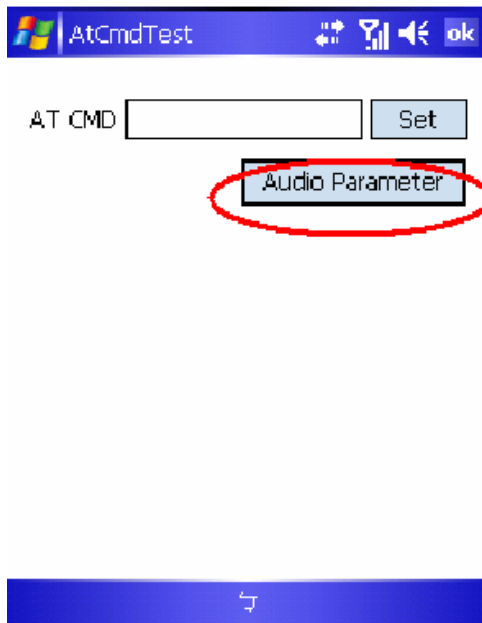
a. Open the wireless administrator and open GSM



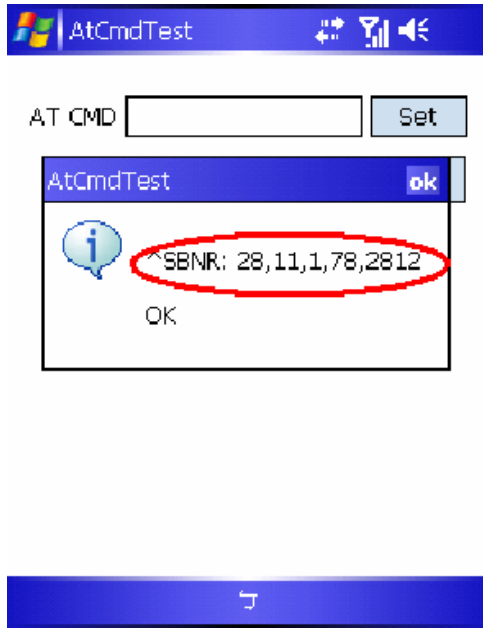
b. Please click "ATCmdTest" procedure



c. Please click "Audio Parameter" procedure



d. Show that upgrades the edition



Renewal process please it re executes to be if not all right to

Please pass on RD analyze at appearing picture the following

